

Shaping a Sustainable Future in the Pacific

IUCN Regional Programme for Oceania 2009-2012

(from the 2007-2012 IUCN Oceania Planning framework)



The *IUCN Regional Programme for Oceania 2009-2012* provides the framework for planning, implementing and evaluating actions with and on behalf of IUCN Members in Australia, New Zealand and the Pacific Islands. It is a results-based, demand driven plan of action that provides a framework for the activities of the IUCN Secretariat and Commissions in the region.

Membership



- Currently 44 members in the region
 - Australia; NZ; Fiji; Nauru & Solomon Islands are State Members
 - Newest members admitted in 2010 are Solomon Islands & Nauru

- Members
 - Australia: 26
 - NZ: 9
 - New Caledonia: 2
 - French Polynesia: 1
 - Tonga: 1
 - Fiji: 3
 - Nauru: 1
 - Solomon Islands: 1

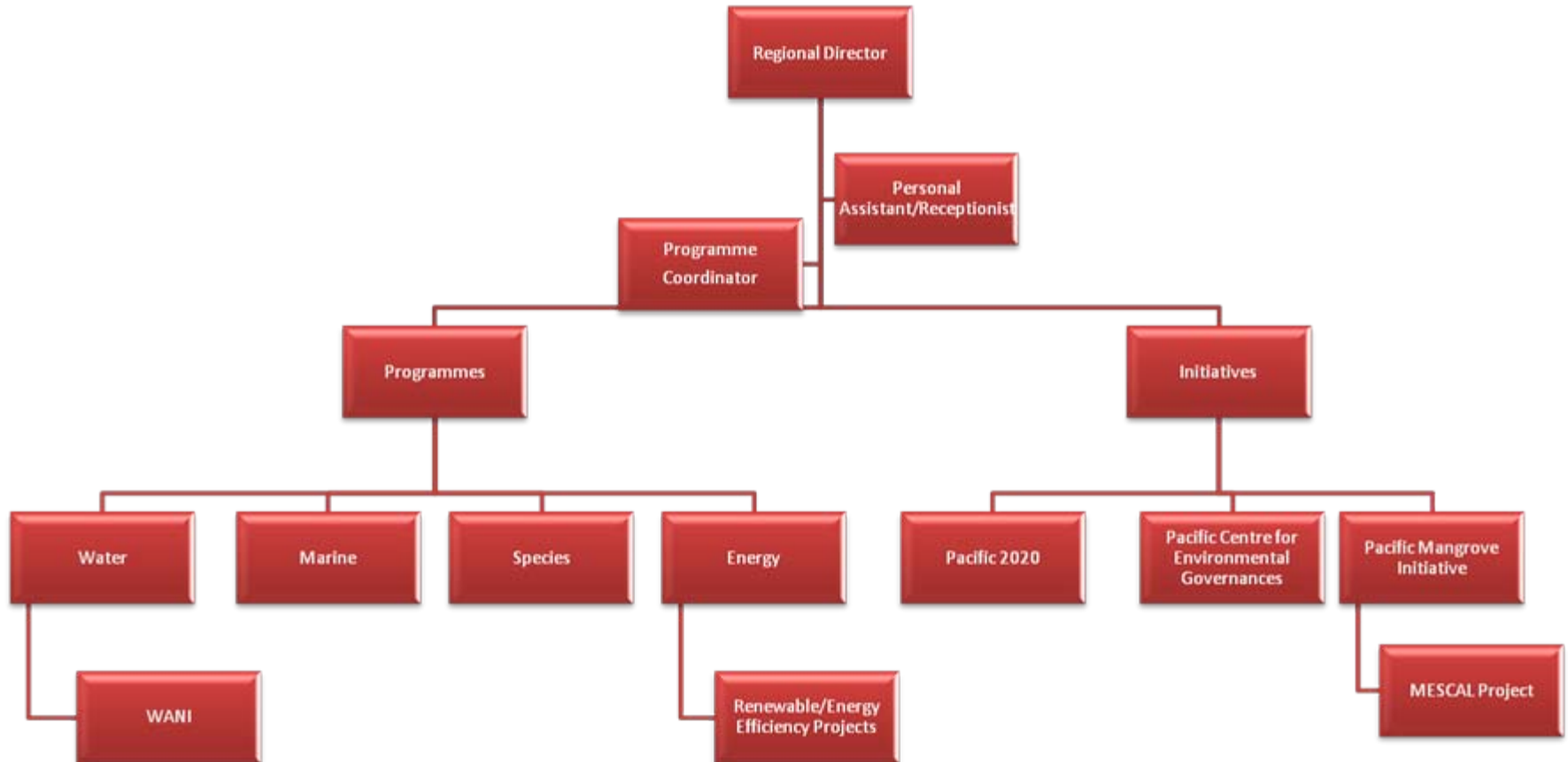


IUCN ORO

- 18 staff
- 2 office buildings



IUCN ORO



Approach

- Develop strong environmental governance.
- Innovative partnerships— civil society, churches, communities, governments and regional institutions
- Improve coordination between conservation organizations, governments and partners at national and regional level.

Partnership Approach

- working with national governments
- aligning activities with existing regional priorities
- achieving results in collaboration with partners.
- SPREP
- SOPAC
- USP

In 2007, IUCN and SPREP renewed their long-standing relationship with a memorandum of understanding

In 2009 IUCN and USP signed an MOU

IUCN in the Pacific



Four key areas for its work in the region

(These complement IUCN's Global Programme 2009 – 2012 and are aligned with regional priorities and initiatives)

- *Species:*
- *Marine:*
- *Water:*
- *Energy:*





Species Program

- Development of Pacific Red List
- Alien and invasive species networks
- CITES / TRAFFIC



Wetland and Water Program

- **WANI (Water and Nature Initiative)**
- Building capacity in watershed management at community, national and regional levels using WANI tools
- Testing Climate Change Adaptation tool: CRiSTAL
- Development of Learning and Leadership proposal linking to regional strategic plan
- Study sites in Fiji and Samoa at present



Energy Program

- One major initiative *“Managing the Ecosystem and Livelihood Implications of Energy Policies in the Pacific Island States”*,
- 6 countries
- 3 years – around Euro 4 million
- Basis for development of a sustainable energy program to include:
 - Renewable energy
 - Energy efficiency

Marine Program

IUCN activities under the Pacific Islands Oceanic Fisheries Management Project

- What is the interaction of between pelagic fishing and sea mounts ?
- Focus on long-line fishing and whether sea mounts are targeted for fishing ...

Pacific Mangroves Initiative

- Builds on IUCN experience in Asia
- Research and information sharing for mangrove conservation
- Climate change mitigation
- Climate change adaptation
 - Storm protection
 - Coastal protection
 - Adaptation to sea level rise
- 5 countries
- \$3 million
- 4 years
- In inception phase





The Pacific Ocean 2020 Challenge
Rescuing an Ocean in Crisis

Pacific Ocean 2020 Challenge

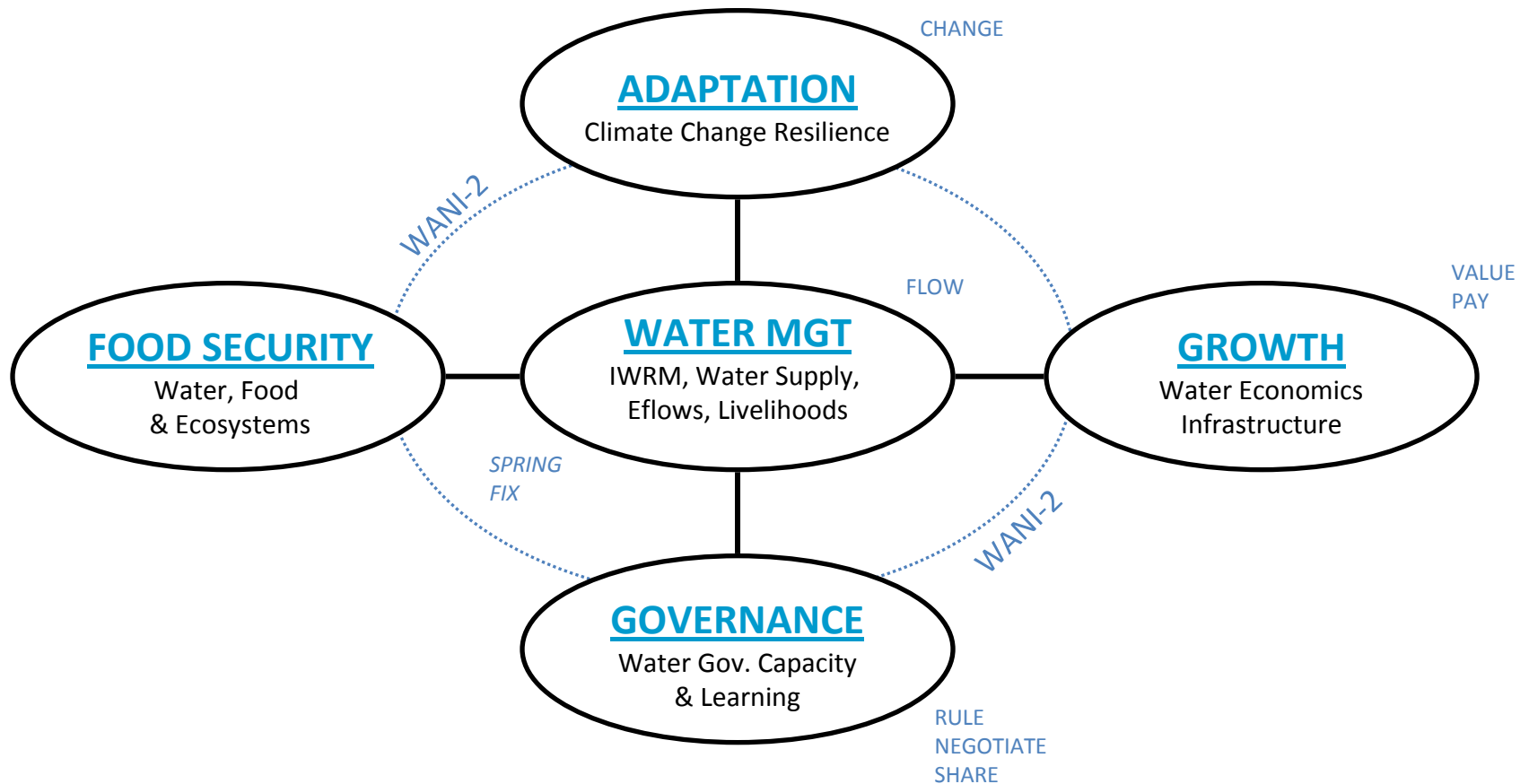
- Scientific consensus statement on key threats - Pacific Ocean;
- *Pacific Ocean Report* to raise awareness of the enormous value of Pacific Ocean resources to coastal communities and countries in and around the Pacific Ocean, and the global economy; to highlight the consequences of inaction; and to recommend priorities for action;
- establishing a multi-stakeholder partnership to develop and implement a *Pacific Ocean 2020 Strategy*
- establishing a *Pacific Ocean Trust Fund*; and
- launching a biennial *Pacific Ocean Summit* in 2010

IUCN Oceania WANI Programme

IUCN – The International Union for the Conservation of Nature



Water Programme



WANI Phase 1

Commenced work in 2008 in 3 sites:

- Kadavu, foundations laid for up-scaling into the LMMA model
- Nadi, supporting the establishment of the Nadi Basin Catchment Committee
- Samoa, work commenced on developing a Togitogiga water resource management plan

WANI Phase 2

- 2009-2010 & 2011-2013
- Continuing work in three original sites
- Developing capacity development programme across the Pacific using **WANI tools**
- Testing Climate Change Adaptation tool: CRiSTAL
- Development of Learning and Leadership proposal linking to regional strategic plans



Kadavu Island - Fiji

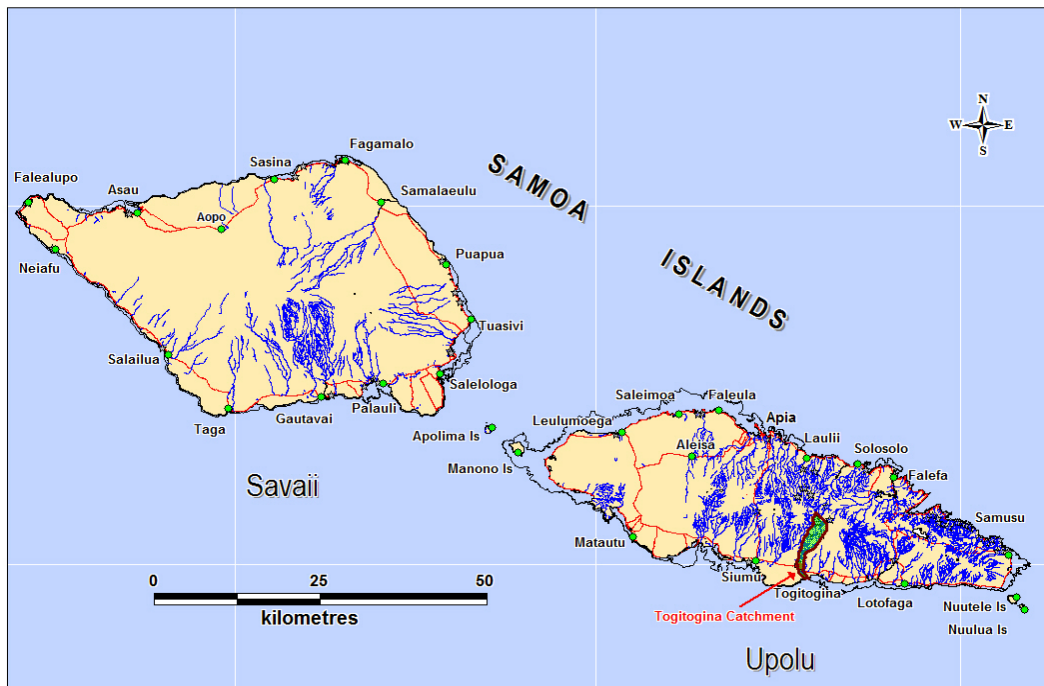
- Increasing awareness of ridge-to-reef principles
- Prioritising activities from Yaubula (natural wealth) management plans at the village level
- Engaging Provincial level government in community-based water resource management
- Demonstrating community-based management level for improved water governance in Fiji

Nadi Catchment (GEF-IWRM site)

- Support capacity building of the Nadi Basin Catchment Committee
- Promote multi-stakeholder participation in decision-making
- Review economic mechanisms for upstream/downstream benefits
- Review policy and legislation and make recommendations
- Mangrove mapping and promotion of ridge-to-reef concepts

Togitogiga Watershed Samoa

- Investigate causes of reduced flows
- Engage stakeholders at all levels in the development of a water resource management plan
- Implement improved land management practices
- Examine payment for ecosystem services



- Sulang
- Vinaka vakalevu
- Thank you very much