



SOUTH PACIFIC APPLIED GEOSCIENCE COMMISSION

&

WORLD HEALTH ORGANIZATION

WATER SAFETY PLANS

VANUATU SCOPING MISSION

ROUNDTABLE MEETING

2.00pm, Monday 08 May 2006

Dept. of Geology, Mines & Water

Resources conference room



Findings:



- Strong interest from key authorities (Dept. of Geology, Mines & Water Resources, Min. of Health, Dept. of Public Works) to work together to establish WSP pilots in Port Vila and Luganville
- National Water Resource Management Advisory Committee could take on the responsibilities of the WSP National Steering Committee as it essentially has the right composition of stakeholders
- The work done by the Tagabe River Management Committee (i.e. catchment management and zoning plans) could be built on by a Port Vila WSP
- There is good scope for WSP approach in Port Vila and Luganville (and other smaller) urban systems

Findings:



- Water Quality in both urban centers (Port Vila and Luganville) is generally very good with only calcium hardness to note. The only treatment is Chlorination. However, in both cases, aquifer levels are decreasing while pumping demand is increasing
- Both aquifers are under increasing pressure from agriculture, housing and other developments within the catchment protection zones that have been established
- Good efforts (catchment protection zones) to protect both urban (Vila and Luganville) catchments with SOPAC, SPREP, UNDP support / encouragement but mainly through Government's own initiatives
- Rural supplies are more variable with many unprotected sources affected by pollution and in some cases, contaminated by volcanic ash and gas emissions

Mitesh Mudaliar,WHO,SP

Findings:



- Rural water supply ongoing focus for ‘coverage’ could begin to shift towards ‘quality’; the Port Vila system is also interested in ensuring quality, having achieved leak reduction and consumer metering
- 6 existing laboratories were visited: UNELCO, MoH, VCH, Dept. of Geology, Mines and Water Resources, Department of Public Works (Port Vila), ND Hosp.(Luganville)
- A need to rationalize/support/coordinate this array of labs and their functions
- All (except UNELCO) had problems with expired consumables, low volume of water analysis and insufficient capacity/operator skills

Findings:

- There is consensus on the usefulness of village and household risk management approach
- There is recommendation by MoH to consider applying risk management approach in Volcano affected communities
- The Water Resources Act requires formation of water resource protection zones



Mitesh Mudaliar,WHO,SP

Findings:

Port Vila Water Supply

- UNELCO, SHEFA Provincial Council, Port Vila Municipality agree to support/participate in a Port Vila WSP
- UNELCO is interested in applying WSP approach to the Port Vila water system
- Agreed to support the programme via facilities e.g. Laboratory



Findings:

Luganville Water Supply

- Strong interest and support from the SANMA Water Resource Management Committee, Dept. of Public works and Dept. of Geology for a WSP pilot in Luganville



Mitesh Mudaliar,WHO,SP

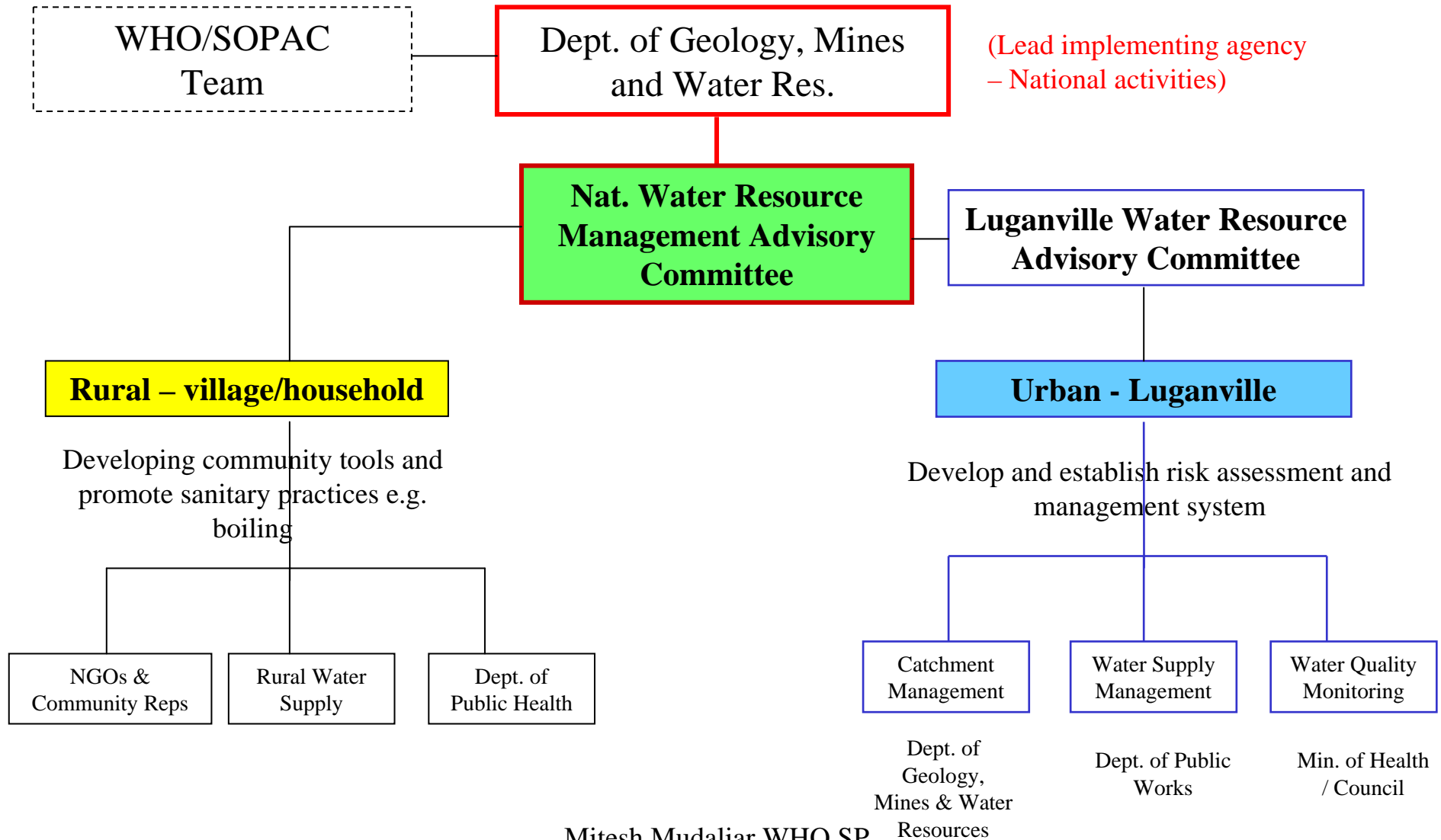
Agencies recap potential role:

Agency	Current programmes	Interest	Capacity	Role
Department of Geology, Mines and Water Resources	Rural water supply Water resource mngt.	NWRAC, TRMC		Key Implementing agency
Ministry of Health	Water Quality Monitoring Disaster Response	NWRAC		Implementing Agency
Department of Public Works	Urban Water Supply (except in Port Vila)	NWRAC		Implementing Agency
UNELCO	Water Producer – Port Vila	NWRAC		Key Partner
NGOs: Live & Learn Wan Smolbag FSP Vanuatu	Education / Awareness Advocacy Desalination	NWRAC		Key Partner
Provincial Councils & Municipalities	Land-use planning	NWRAC, TRMC		Key Partner
WHO SOPAC	Water Safety Plans; Water Quality Monitoring Programme; NZMoH Support;	Improve Drinking Water Quality in Vanuatu; I Mitesh Mudaliar, WHO, SP		Key Support agencies

Possible products and outputs:

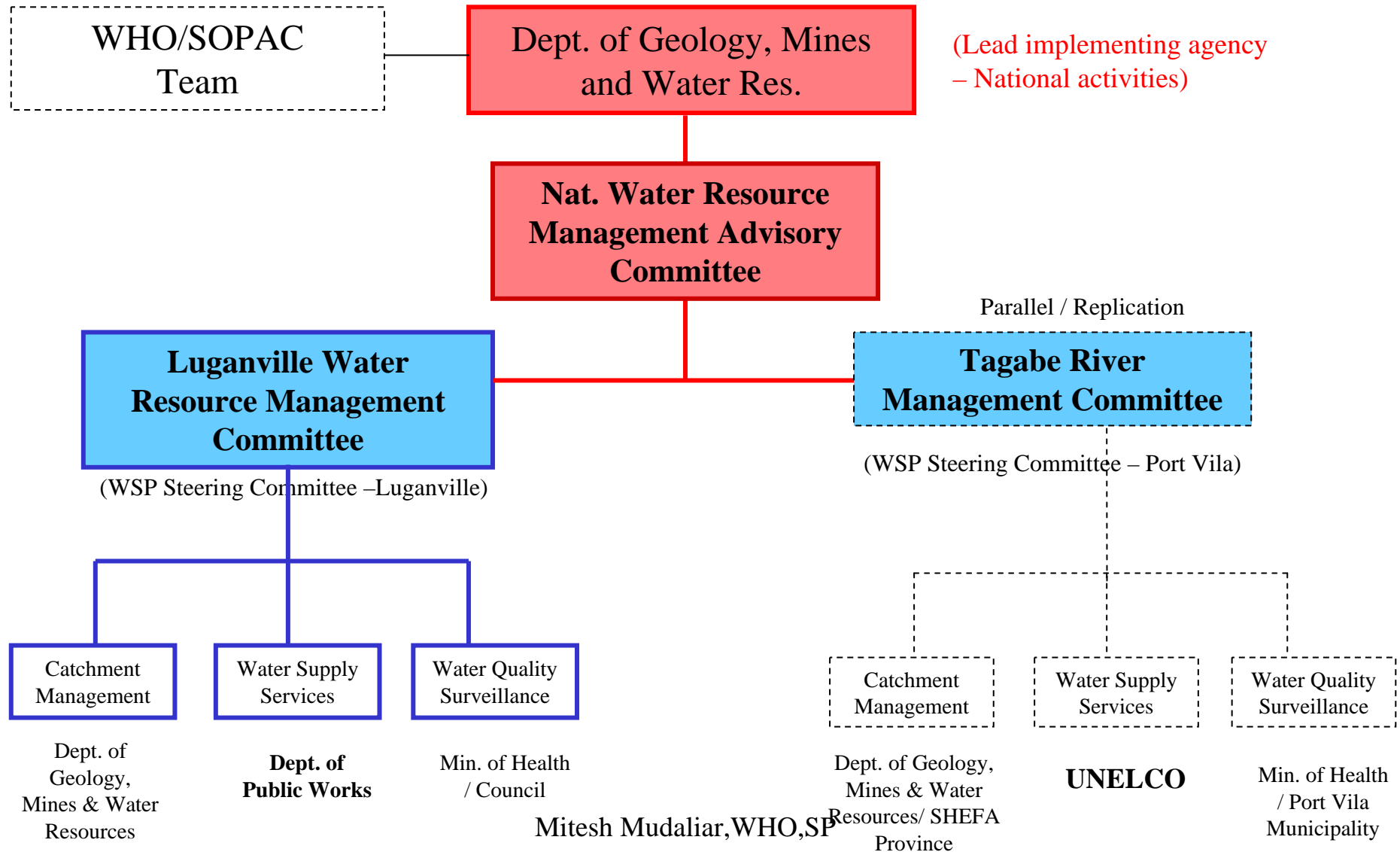
- Establish a National WSP Framework / Standards (could be developed during Workshop)
- Rural WSP standards / guidelines (for easy replicability)
- Risk assessment / management system to ensure safe water
- Laboratory capacity (core functions) and coordination improved
- Key staff aware of SOP's and risk management plan(s)
- Contingency / emergency procedures and/or plans established
- Support zoning of catchment (or catchment protection plan)
- Establish H2S test production / recycling arrangements
- Response for Volcano affected communities
- Community awareness package incl. H2S and Sanitary Surveys, proper hygiene & sanitation
- School programmes and informal education in WSP activities e.g. in school curriculum

Possible Project Structure: Functional

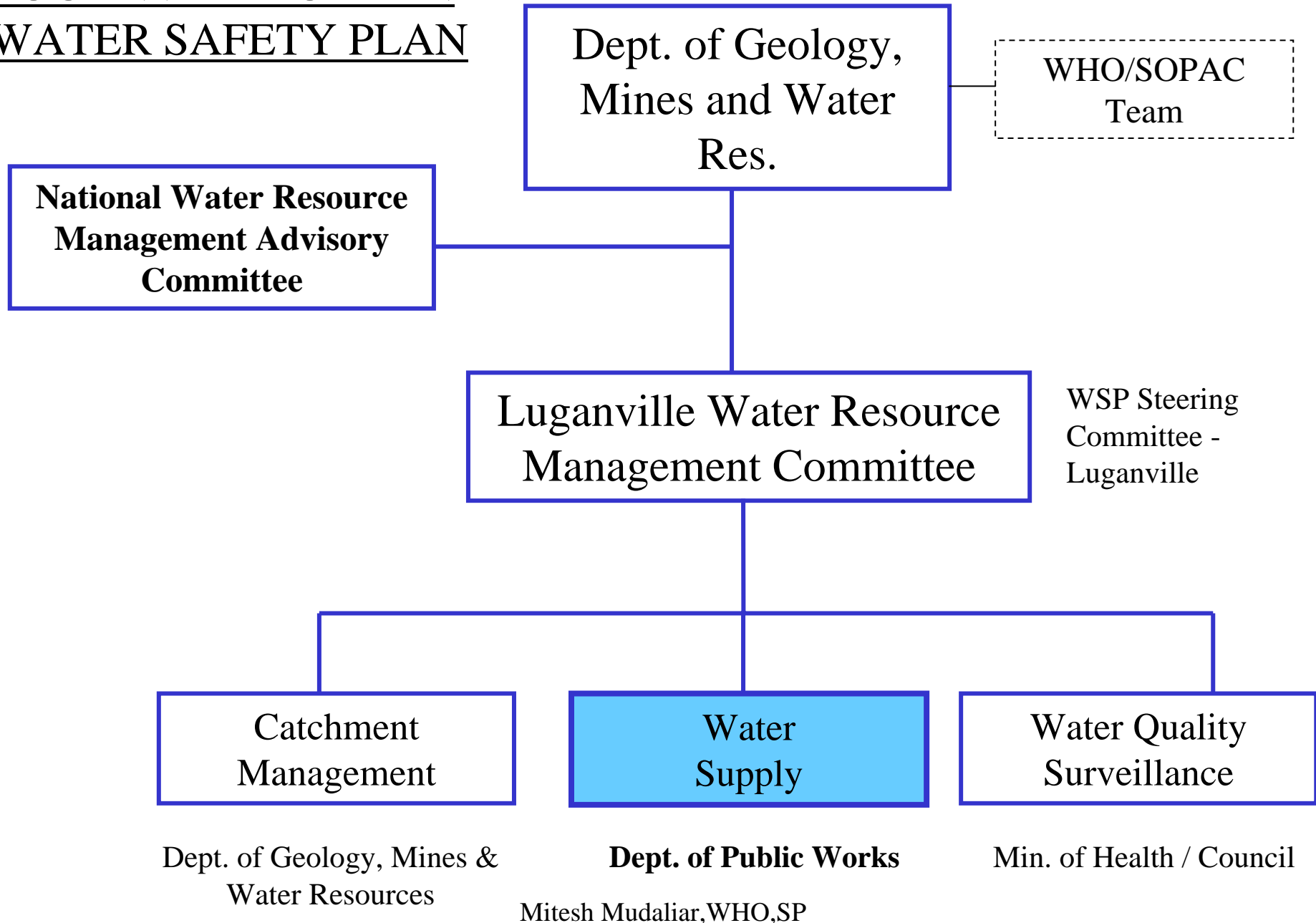


Mitesh Mudaliar, WHO, SP

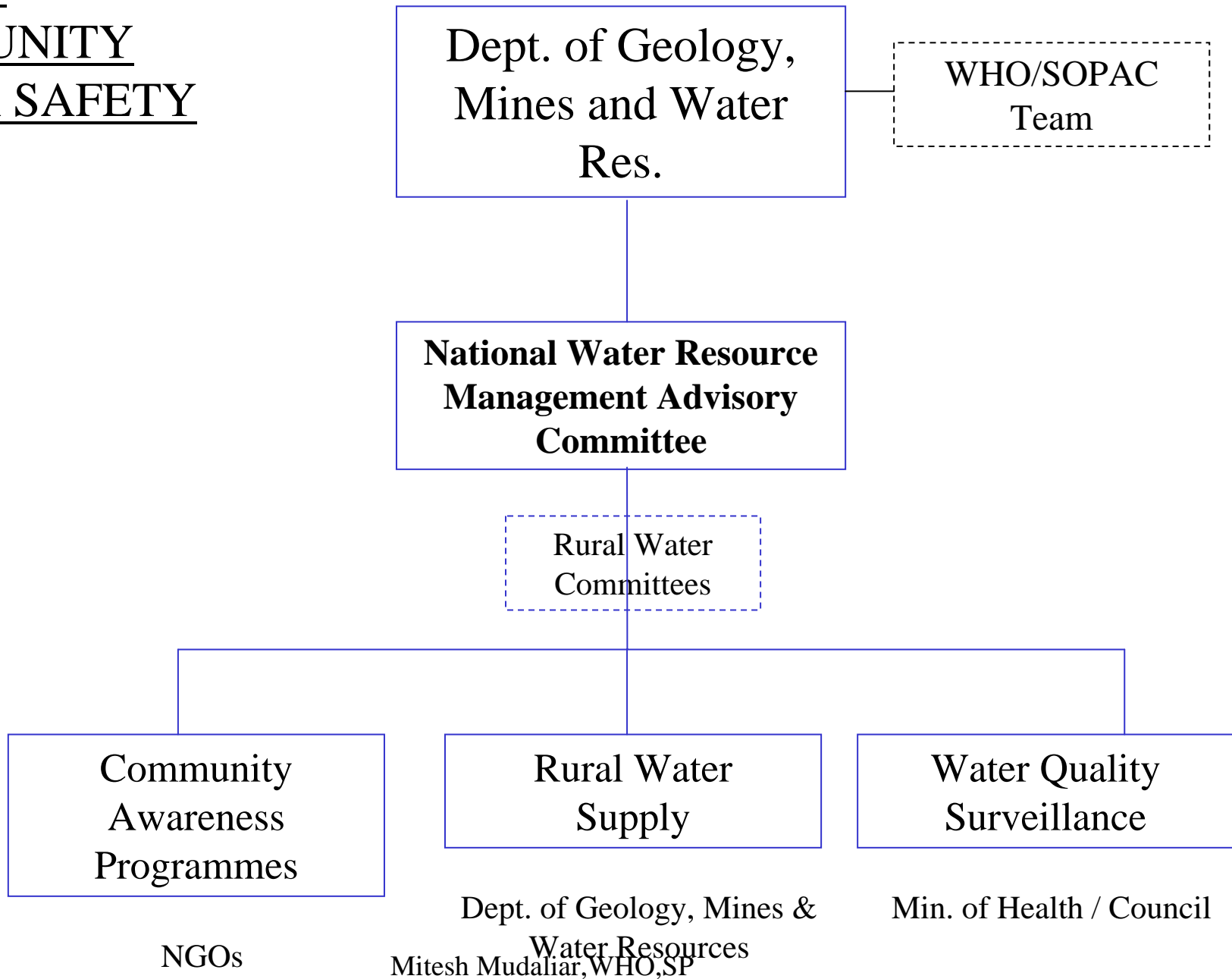
Possible Project Structure: Urban



LUGANVILLE URBAN WATER SAFETY PLAN



RURAL/
COMMUNITY
WATER SAFETY
PLAN



Possible next steps:



Possible early activities:



- Commitment by Govt. of Vanuatu
- Consider workshop to train and plan for WSP project
- Preparations for workshop on risk assessment / management training and planning (proposed objectives, programme, participants, experts, venue, budget, logistics) by Dept. of Geology / National Steering Committee
- Possible water supply system description, assessment and risk analysis by UNELCO (Port Vila), Dept. of Public Works (Luganville) using WSP worksheets
- Possible H₂S Test production / recycling arrangements by MoH

WSP Pilot Committees:



Rural Water Safety Plans

Dept. of Geology, Mines & Water Resources

Dept. of Public Health

Dept. of Public Works

NGOs (Live & Learn, Red Cross, VANGO, Community/Women's Groups)

Provincial Councils

WHO

Ministry of Education ??

Luganville Water Safety Plans

Dept. of Geology, Mines & Water Resources

Dept. of Public Health

Dept. of Public Works

VECA

NGOs (Live & Learn, Red Cross, Community/Women's Groups)

SANMA Provincial Council

Luganville Municipality

ND Hospital

National Water Resource Advisory Committee (National Steering Committee):

Possible Terms of Reference:

Role: Guide the implementation of the National WSP activities, make decisions and ensure inter-agency cooperation

- Guide WSP national activities
- Ensure sharing of information among related projects
- Oversight of international and local inputs and resources

Commitment:



- **Department of Geology, Mines and Water Resources (time, effort) and players (focal point / coordination)**

- **Nature of project support from WHO/SOPAC programme**
 - Technical Support
 - WHO/SOPAC Project Officers & advisors
 - NZ MoH Experts
 - Support for Training workshop & Capacity Building
 - Development of Tools (Print Materials)

- **Letter requesting Vanuatu's inclusion in the Programme from Ministry of Lands & Natural Resources**

Mitesh Mudaliar, WHO, SP