



**SOUTH PACIFIC APPLIED GEOSCIENCE COMMISSION**

**&**

**WORLD HEALTH ORGANIZATION**

# **WATER SAFETY PLANS**

**VANUATU SCOPING MISSION**

**WRAP-UP MEETING**

**8.00am, Tuesday 09 May 2006**

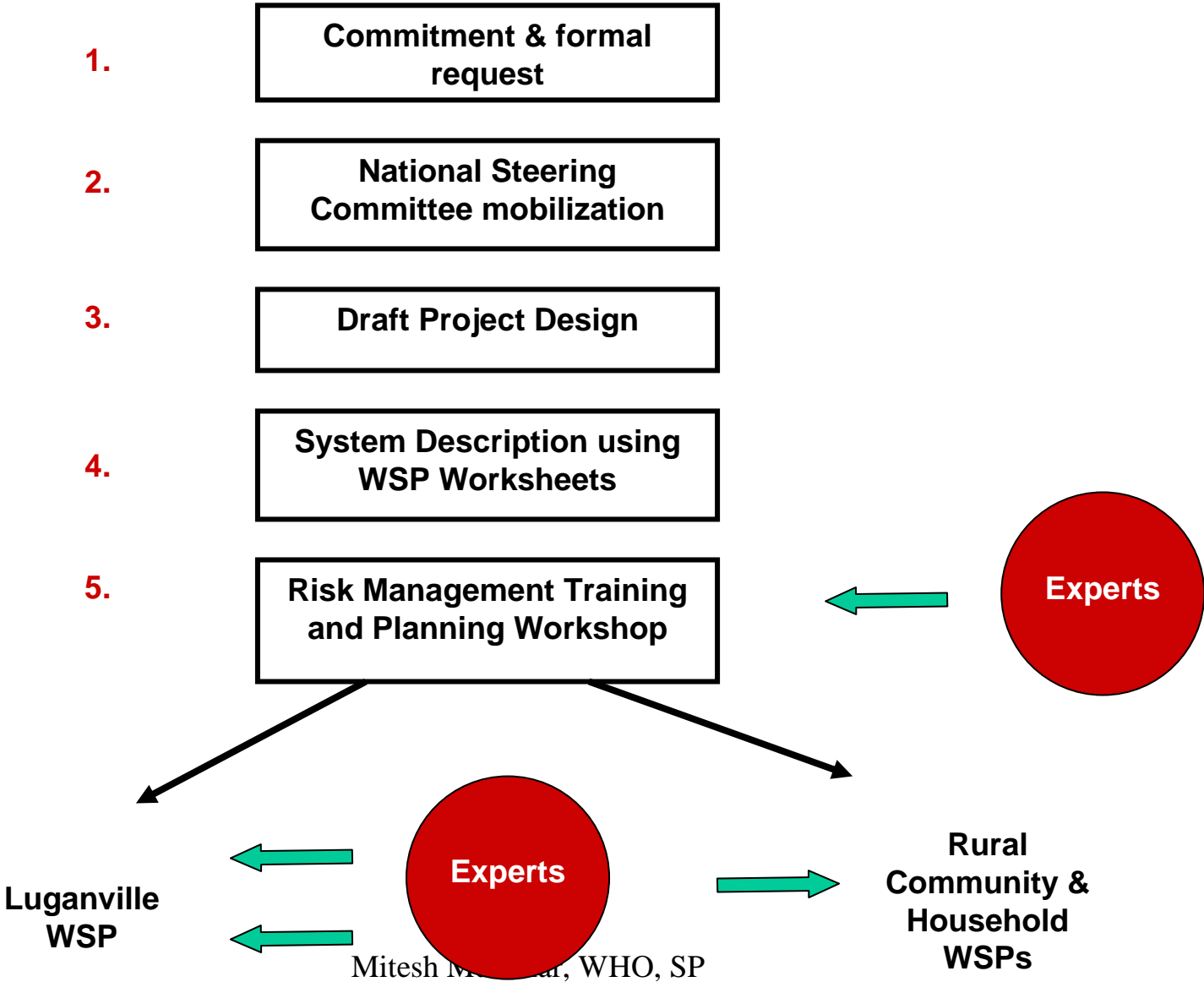
**Ministry of Lands conference room**



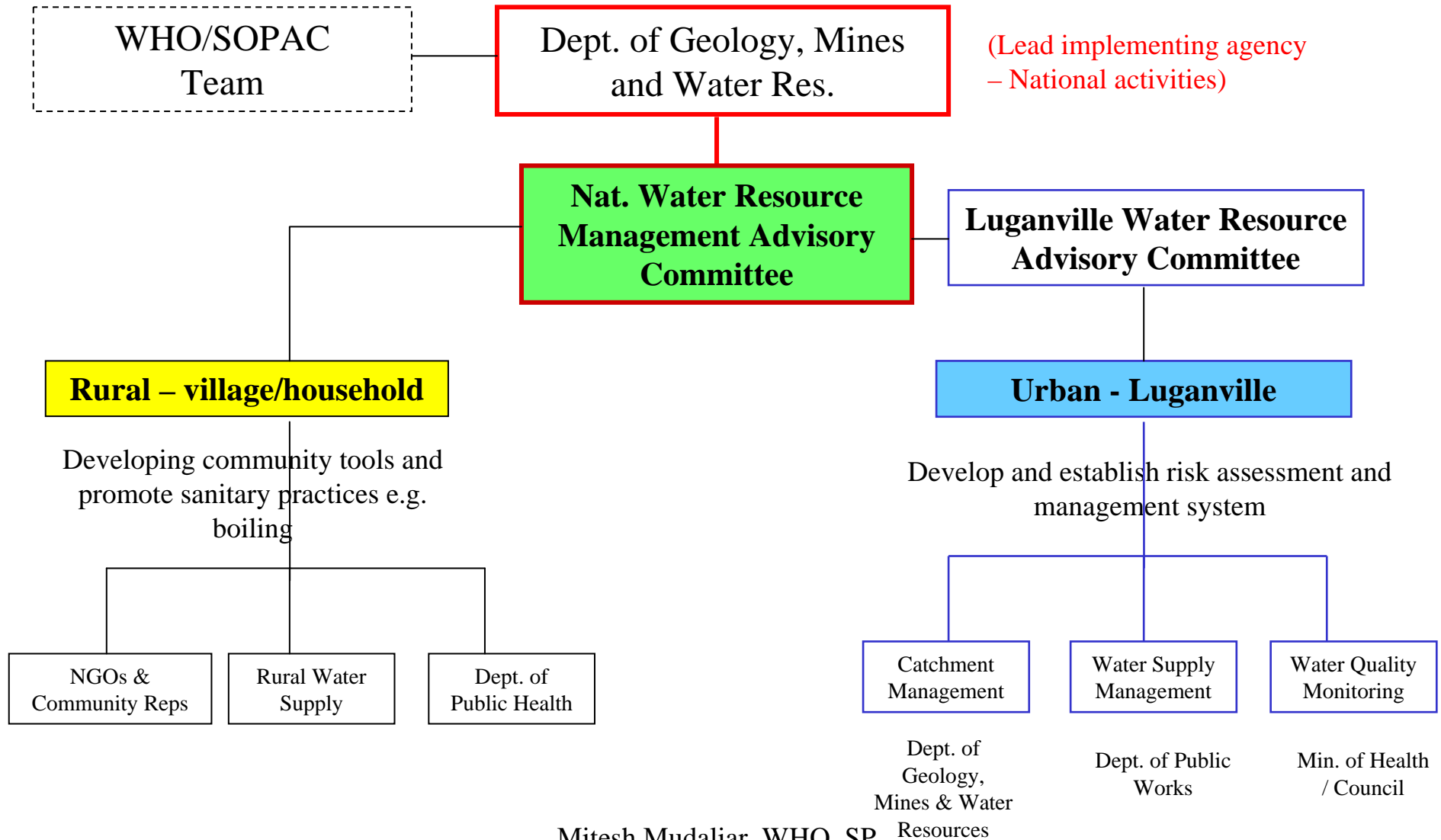
# Possible products and outputs:

- Establish a National WSP Framework / Standards (could be developed during Workshop)
- Rural WSP standards / guidelines (for easy replicability)
- Risk assessment / management system to ensure safe water
- Laboratory capacity (core functions) and coordination improved
- Key staff aware of SOP's and risk management plan(s)
- Contingency / emergency procedures and/or plans established
- Support zoning of catchment (or catchment protection plan)
- Establish H2S test production / recycling arrangements
- Response for Volcano affected communities
- Community awareness package incl. H2S and Sanitary Surveys, proper hygiene & sanitation
- School programmes and informal education in WSP activities e.g. in school curriculum

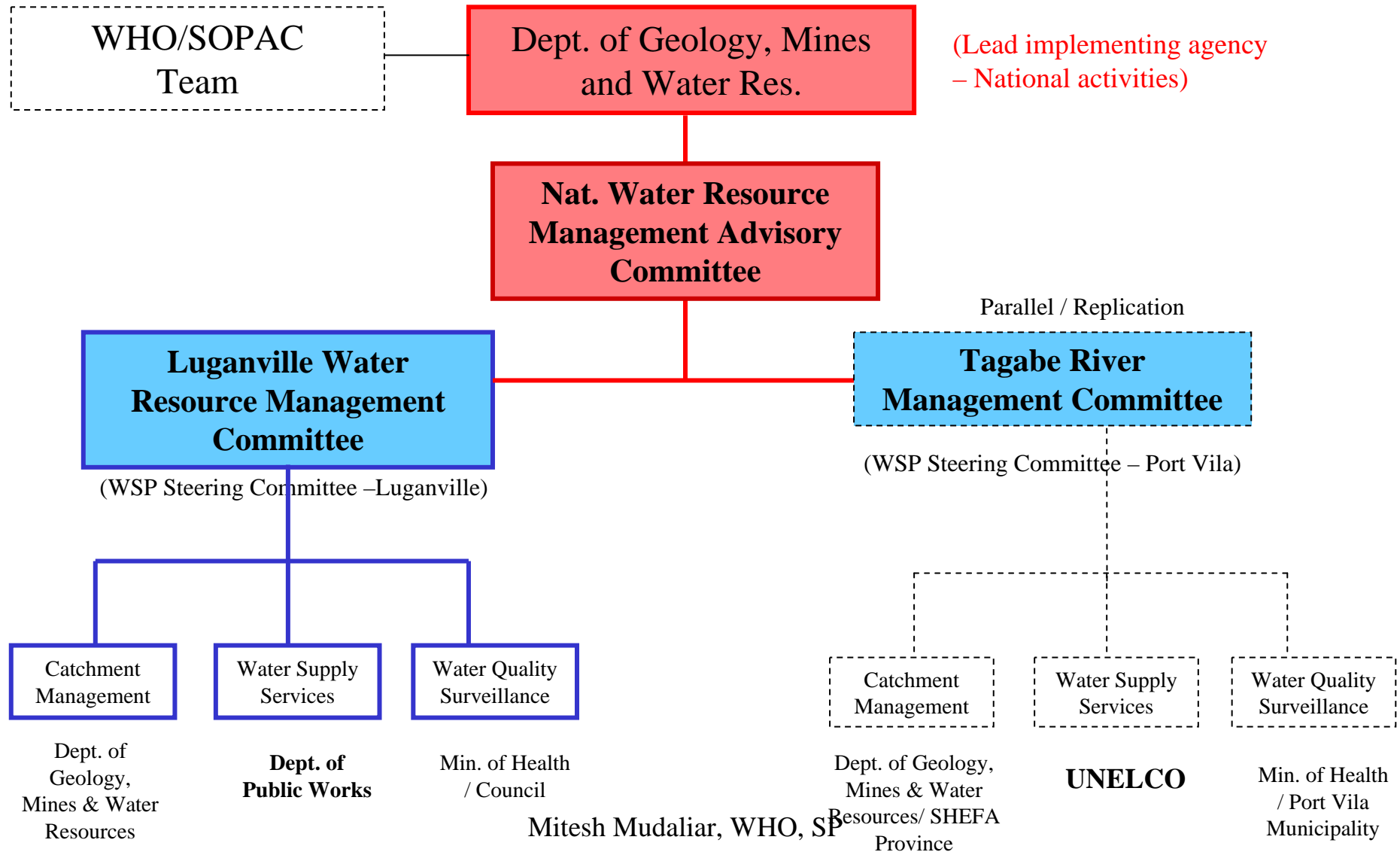
# Possible next steps:



# Possible Project Structure: Functional



# Possible Project Structure: Urban





# Risk Assessment & Management Workshop and Planning

Workshop Schedule: Prep. day, 3 days training, 1 day planning, wrap-up day

Dates: Late August or early September (last 2 wks of September and first wk of October - commitment)

## Training 3-Days

Participants: DGMWR key staff, MoH key staff, Public Works Department and UNELCO

Observers: NGOs

Venue: Port Vila or Luganville

Programme: TBC – DGMWR & SOPAC

Budget: TBC – DGMWR & SOPAC

## Planning 1-Day

Venue: ?? TBC - DGMWR & SOPAC

Programme: TBC – DGMWR & SOPAC

Budget: TBC – DGMWR & SOPAC

# Draft Project Design



## Urban Water Supply

Follow 6-step process (approx. 6 months)

Inputs: Staff Training ('Train the Trainers' – for replicability in-country)

Experts

Objectives: Train DGMWR staff as WSP trainers

Replicability of WSPs in-country (both urban & rural)

Improve drinking water quality & reliability

Long-term target –

Stimulate donor response to capital improvements needed for drinkable water



# Draft Project Design



## Urban Water Supply

Outputs: Train the Trainers Workshop on Risk Assessment & Management

In-house Capacity to train other rural / outer island staff/partners on WSPs

Improve Quality of Drinking Water

Documentary / Instruction Video

Needed Capital Works identified and justified through WSPs

Inventory of Studies Reports, Plans etc

Area: Luganville Catchment (and Tagabe River Catchment)

Issues to note: WSP on existing site – need to fill some gaps in information

# Draft Project Design

## Rural / Household / small system

### WSPs

Inputs: Staff Training ('Train the Trainers' – for replicability in-country)

Experts

Objectives: Establish rural WSP standards

Improve drinking water quality in rural areas

Increase community awareness on drinking water issues

Area: Whole of Vanuatu (Efate initially & other islands long-term)

Development and testing of materials in selected communities

Issues to note: Volcano Affected areas/communities

# Draft Project Design

## Household/small systems WSPs

Outputs: National Framework / Plan / Standards for rural WSPs

Packages (toolkit) of IEC materials for community & households on

Toolkit: H/H Rainwater Catchment Mngt. Kit , H2S Test Kit, Disinfection options(filters, UV/SODIS etc) – adapted as appropriate

Draft minimum standards for Rainwater Catchment (incl. in building permits/donors etc)

Documentary / Instruction Video (with focus on Vanuatu rural communities)

Trained Trainers (DGMWR Officers, NGOs, EHOs)

# Draft Project Design:

## Vanuatu

National Water Resource Advisory Comm.

